

Original Research Funding Open Call

Original Research Funding Open Call

This call was sent out to all academics and professional service staff in the University of Sheffield in November 2024.

This call was also supported by The Participatory Research Network (PRN) is a university-wide initiative that seeks to promote and embed participatory research in the practices of researcher across the University of Sheffield.

A **number of activities of the PRN** (<https://www.sheffield.ac.uk/ihuman/waarc/prn-activities>) have taken place during the time of WAARC that have helped build a participatory university ethos.

More information on how this Open Call was created can be found here - **Conversation with Sophie Phillips.** (<https://www.sheffield.ac.uk/ihuman/waarc/conversation-about-collaboration>)

Original Research Funding Call for Disability Related Small-Scale Research and Innovation Projects sent out in November 2024

++ PLEASE NOTE, APPLICANTS MUST BE EITHER A DPO OR LEAD BY A MEMBER OF STAFF OR A PGR, UNIVERSITY OF SHEFFIELD ++

The Wellcome Trust Anti-Ableist Research Cultures Project (WAARC) - in collaboration with the Participatory Research Network - are seeking applications for small-scale/pump-priming research or innovation projects. Projects must focus on promoting the inclusion of disabled people in or within the University of Sheffield and may reflect or build on some of the aims of the WAARC project included; promoting inclusive recruitment; enhancing flexible working; promoting positive research environment and promoting anti-ableist university cultures. More details can be found at our project website:

<https://www.sheffield.ac.uk/ihuman/waarc> (<https://www.sheffield.ac.uk/ihuman/waarc>)

We would expect to receive project applications with total costs for up to a maximum of £10,000 in total (staff and non-staff costs) where up to £5000 would be costed to meet disability access and consultancy fees of disabled people's organisations.

Project or Innovation Requirements

Each project must be participatory and work in collaboration with a Disabled People's Organisation. It also must be able to be completed within 11 months. The focus of the research or innovation needs to be on disability in research or the university. We understand participatory research to be doing research *with* communities, rather than *on* them.

Who can apply?

Any member of academic or professional services staff or postgraduate research student who intends to still be at the university up until December 2025.

How to Apply

There are two ways to apply:

Option 1: For postgraduate researchers or staff who **do** already have links with a Disabled People's Organisation: Complete and submit a full proposal form by Friday 13th December 2024, via <https://forms.gle/wMYKdBjTXbvFKY958> (<https://forms.gle/wMYKdBjTXbvFKY958>) (google form) or email the word version of the form to prn@sheffield.ac.uk.

Option 2: For postgraduate researchers or staff who **do not** already have links with a Disabled People's Organisation: Complete and submit the expression of interest form by Friday 1st November 2024, via <https://forms.gle/BXac9VMTfmNN6pMfA> (<https://forms.gle/BXac9VMTfmNN6pMfA>) (google form) or email the word

version of the form to prn@sheffield.ac.uk. Interested Disabled People's Organisations will also be expressing interest in this time period. We will seek to match interested postgraduate researchers and staff with Disabled People's Organisations in early November, to enable you to create a full proposal to submit by Friday 13th December 2024.

When will the research take place?

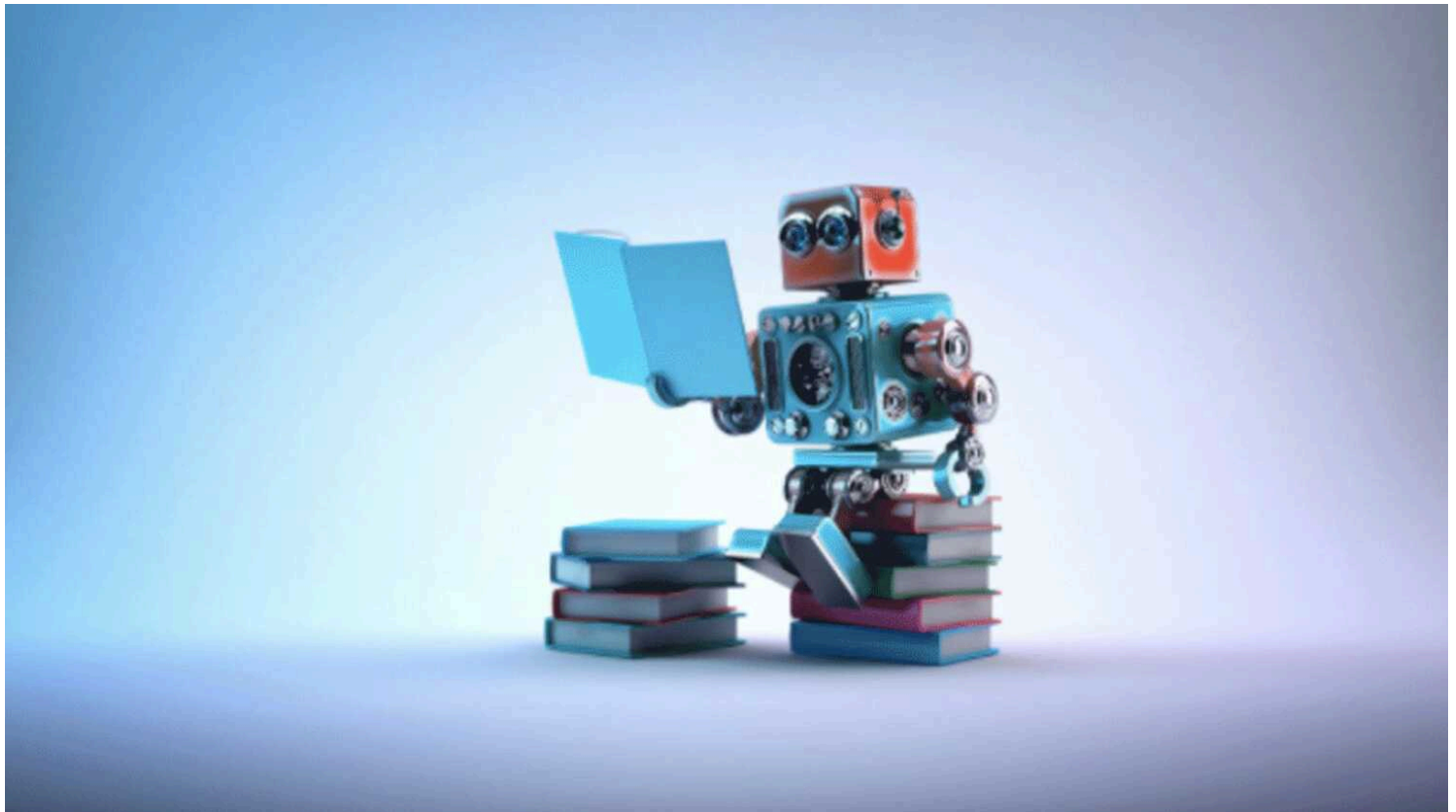
Research will take place from February-December 2025.

Further Information

If you are interested and would like to ask any questions, please email prn@sheffield.ac.uk for an invite to a Google meet on Wednesday 25th September (12:30-2pm) or Thursday 10th October 2024 (3-4:30pm). There is also more information in the 'Further Questions' document.

Closing Date for Full Proposal Applications: Friday 13th December 2024, via google form

<https://forms.gle/wMYKdBjTXbvFKY958>. (<https://forms.gle/wMYKdBjTXbvFKY958>)



iHuman

How we understand being 'human' differs between disciplines and has changed radically over time. We are living in an age marked by rapid growth in knowledge about the human body and brain, and new technologies with the potential to change them.

Centres of excellence

The University's cross-faculty research centres harness our interdisciplinary expertise to solve the world's most pressing challenges.

Centres of excellence
